

The extremely affordable and efficient VISTAFLAME VF100-CB



VF100FS-CB

VF100FPI-CB with
Gold Door CoverVF100FPI-CB with
Nickel Door Cover

VF100FPI-CB

The world's leading stove manufacturer has specially designed the VF100-CB to meet the demand for an affordable pellet stove, without sacrificing important quality features. Available in two models, the VF100-CB have oversized ash pans and large pellet hoppers.

You can even customize the VF100-CB to suit your individual setting with gold and nickel door covers, this attractive stove is easy to use with automatic controls for thermostat operation.

We challenge you to compare the VF100-CB to any other stove. Feature for feature, we're sure you won't find a better value - the whole world over!

VISTAFLAME

HEARTH PRODUCTS

Bob Williamson's
AMERICAN
CHIMNEY SWEEPS
62 PULASKI ST., PEABODY, MA 01960
(978) 532-9200

VF100-CB
Control Board

DIMENSIONS	VF100FS-CB	VF100FPI-CB
Width X Depth	24.375" X 24.375"	22" X 24"
Height	34"	22.75"
A. Front of unit on hearth	-	13"
B. Recess depth into fireplace	-	11"
Standard Surround (H X W)	-	30" X 40"
Oversized Surround (H X W)	-	33" X 46"
C. Side wall to unit	6"	8"
D. Back wall to unit	1"	-
E. Wall to corner of unit	1"	-
F. Floor protector (in front of unit)ⓐ	6"	6"
G. Top of unit to mantle	-	8"
H. Unit to surround top	-	8"
I. Unit to mantle pillar	-	6"

ⓐ Floor protector must be the full width and depth of the unit plus extend 6" in front of the unit.

ⓑ All VISTAFLAME models are approved for mobile home installations, once certain criteria are met.

ⓒ Figures will vary considerably with individual conditions and fuel quality.

ⓓ Figures will vary considerably with floor plan, house layout and heat loss of the house.

Specifications subject to change without notice.

Printed in Canada - May 2005.

FEATURES

- 82% efficient
- Large heat exchanger
- Easy access hopper
- Steel brick firebox liner
- Large ash pan
- Standard ignitor
- Hidden door handle
- Fireplace surround (FPI models only)
- Zero clearance kit (FPI models only)
- Mobile home approvedⓐ
- Automatic controls
- On/Off or Hi/Lo thermostat compatible

SPECIFICATIONS

- Area heated 1000 - 2000 sq. ft. ⓑ
- 55 lb hopper capacity
- 40,000 BTU's of heat (on high)ⓐ
- 10,000 BTU's of heat (on low)ⓐ
- Power usage (ignitor on) 520W
- Power usage (ignitor off) 250W
- 160 CFM convection fan (variable speed)
- 260 lbs in weight

MODELS

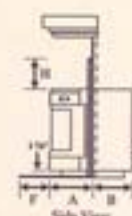
- Freestanding (VF100FS-CB)
- Fireplace Insert (VF100FPI-CB)

OPTIONS

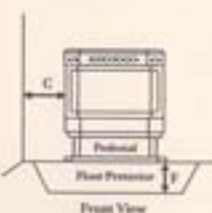
- 24 kt. gold door cover
- Nickel door cover
- Oversized surround (FPI models only)



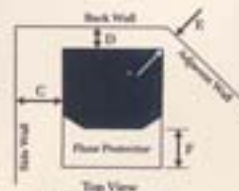
VF100FPI-CB



VF100FPI-CB



VF100FS-CB



VF100FS-CB